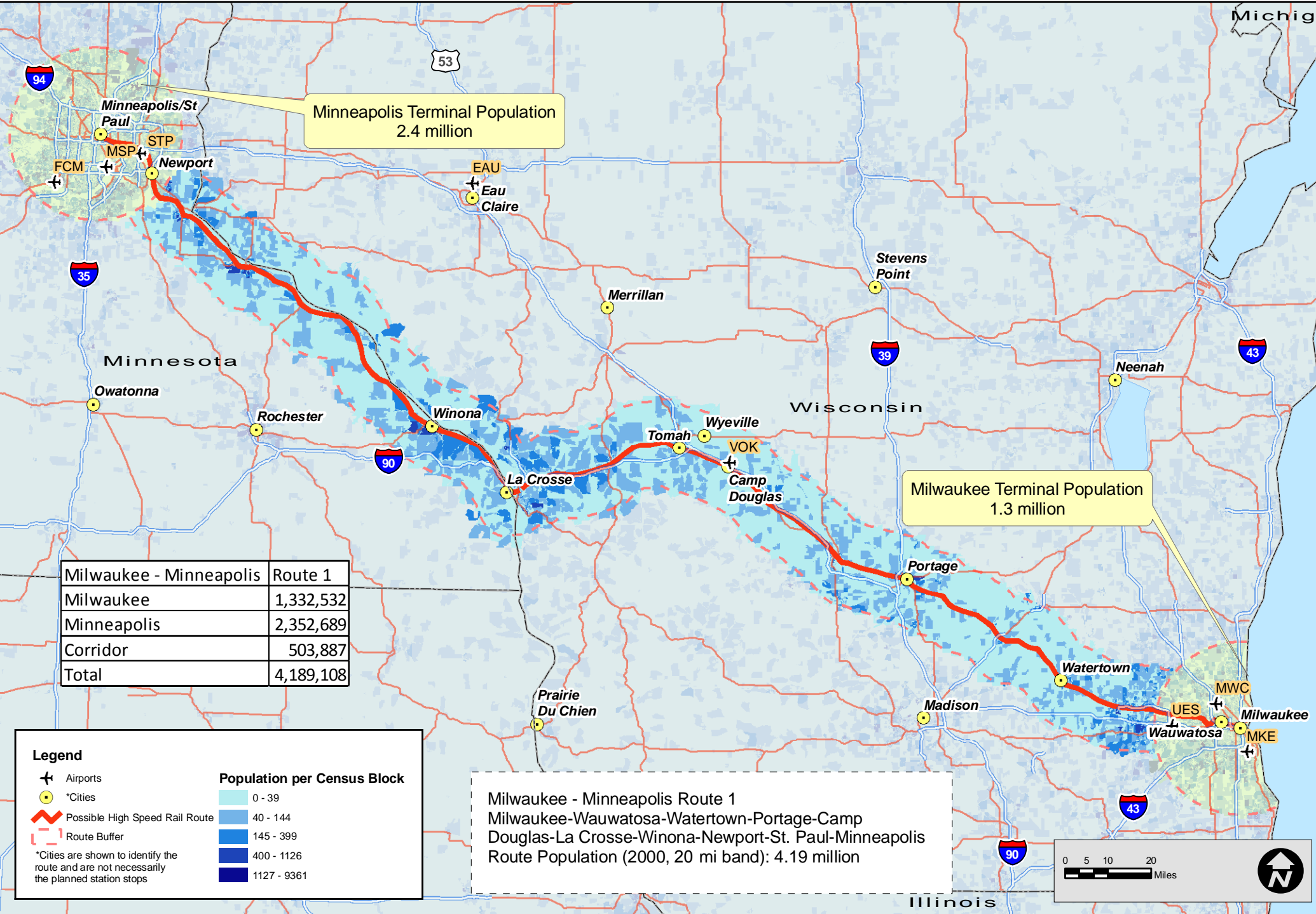


Appendix J – Population Bands



Milwaukee - Minneapolis	Route 1
Milwaukee	1,332,532
Minneapolis	2,352,689
Corridor	503,887
Total	4,189,108

Legend

- Airports
- *Cities
- Possible High Speed Rail Route
- Route Buffer

*Cities are shown to identify the route and are not necessarily the planned station stops

Population per Census Block

- 0 - 39
- 40 - 144
- 145 - 399
- 400 - 1126
- 1127 - 9361

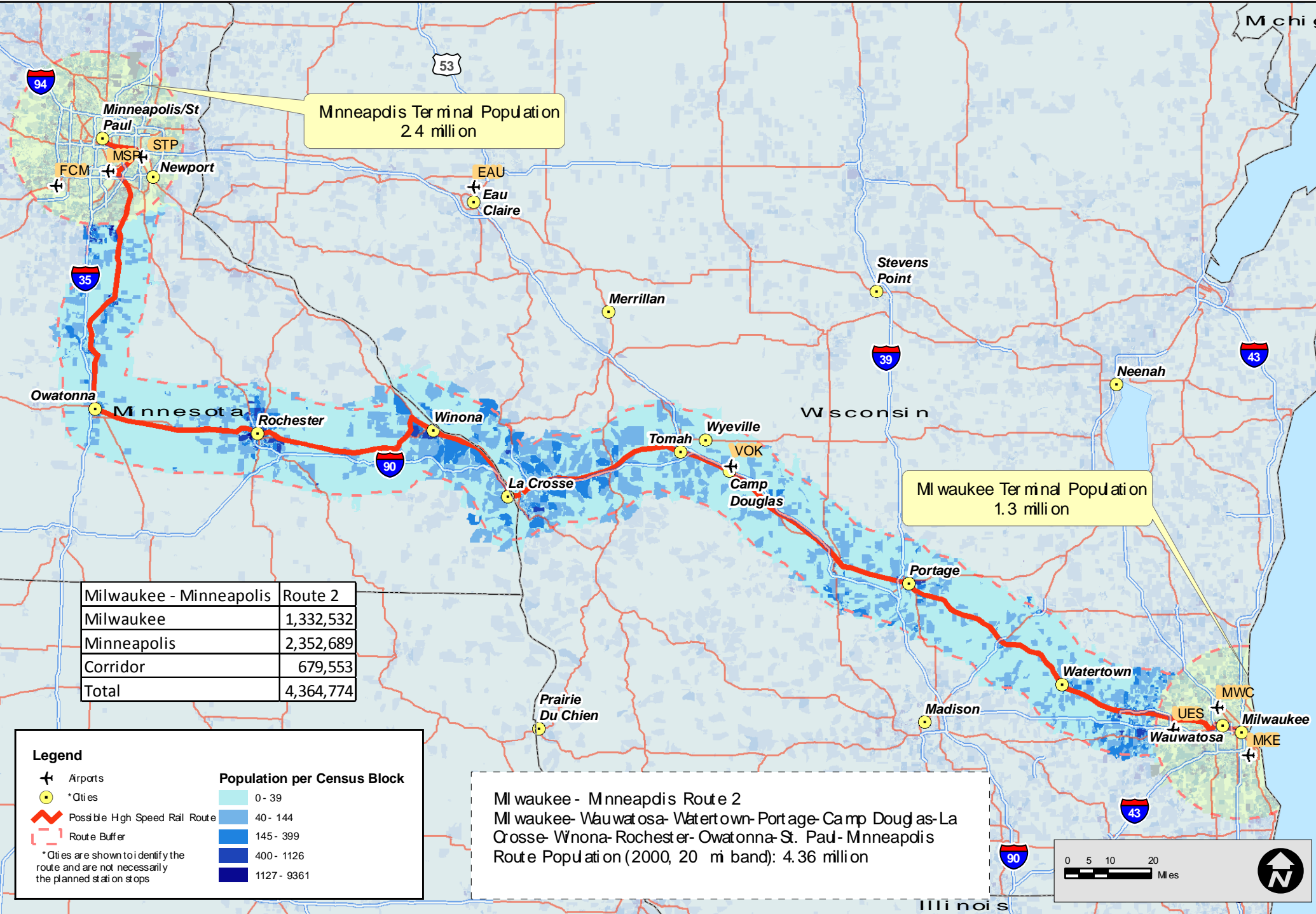
Milwaukee - Minneapolis Route 1
 Milwaukee-Wauwatosa-Watertown-Portage-Camp
 Douglas-La Crosse-Winona-Newport-St. Paul-Minneapolis
 Route Population (2000, 20 mi band): 4.19 million

0 5 10 20
 Miles



Midwest Regional Rail System Alternatives Analysis

Data Sources
 2000 US Census Data - census blocks
 2000 ESRI Census Data (SF1) - population
 2009 ESRI Data & Maps - base data



Minneapolis Terminal Population
2.4 million

Milwaukee Terminal Population
1.3 million

Milwaukee - Minneapolis	Route 2
Milwaukee	1,332,532
Minneapolis	2,352,689
Corridor	679,553
Total	4,364,774

Legend

- Airports
- *Cities
- Possible High Speed Rail Route
- Route Buffer
- *Cities are shown to identify the route and are not necessarily the planned station stops

Population per Census Block

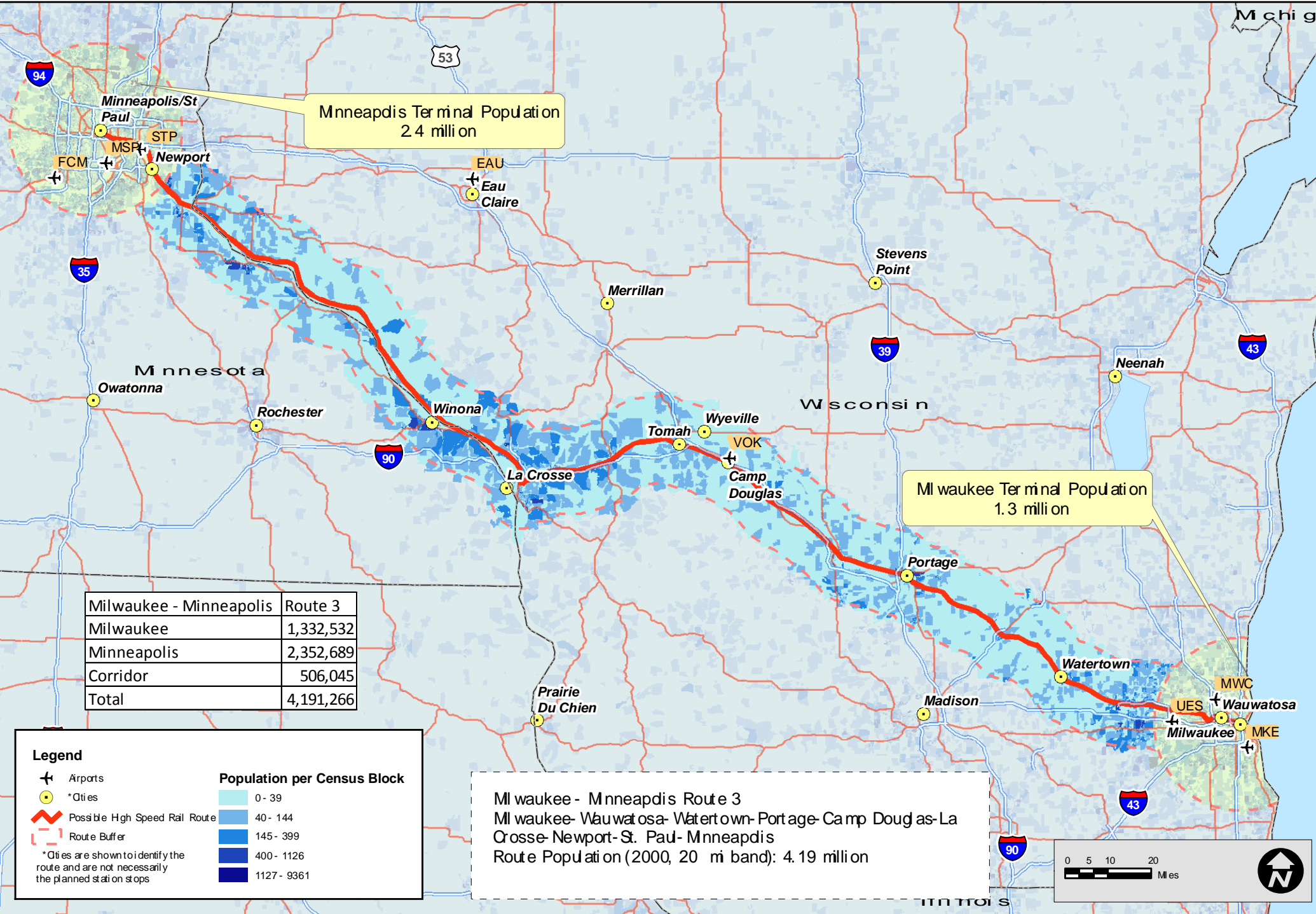
- 0 - 39
- 40 - 144
- 145 - 399
- 400 - 1126
- 1127 - 9361

Milwaukee - Minneapolis Route 2
 Milwaukee - Wauwatosa - Watertown - Portage - Camp Douglas - La Crosse - Winona - Rochester - Owatonna - St. Paul - Minneapolis
 Route Population (2000, 20 mi band): 4.36 million



Midwest Regional Rail System Alternatives Analysis

Data Sources
 2000 US Census Data - census blocks
 2000 ESRI Census Data (SF1) - population
 2009 ESRI Data & Maps - base data



Minneapolis Terminal Population
2.4 million

Milwaukee Terminal Population
1.3 million

Milwaukee - Minneapolis	Route 3
Milwaukee	1,332,532
Minneapolis	2,352,689
Corridor	506,045
Total	4,191,266

Legend

- ✈ Airports
- *Cities
- 🔴 Possible High Speed Rail Route
- ⋯ Route Buffer

*Cities are shown to identify the route and are not necessarily the planned station stops

Population per Census Block

- 0 - 39
- 40 - 144
- 145 - 399
- 400 - 1126
- 1127 - 9361

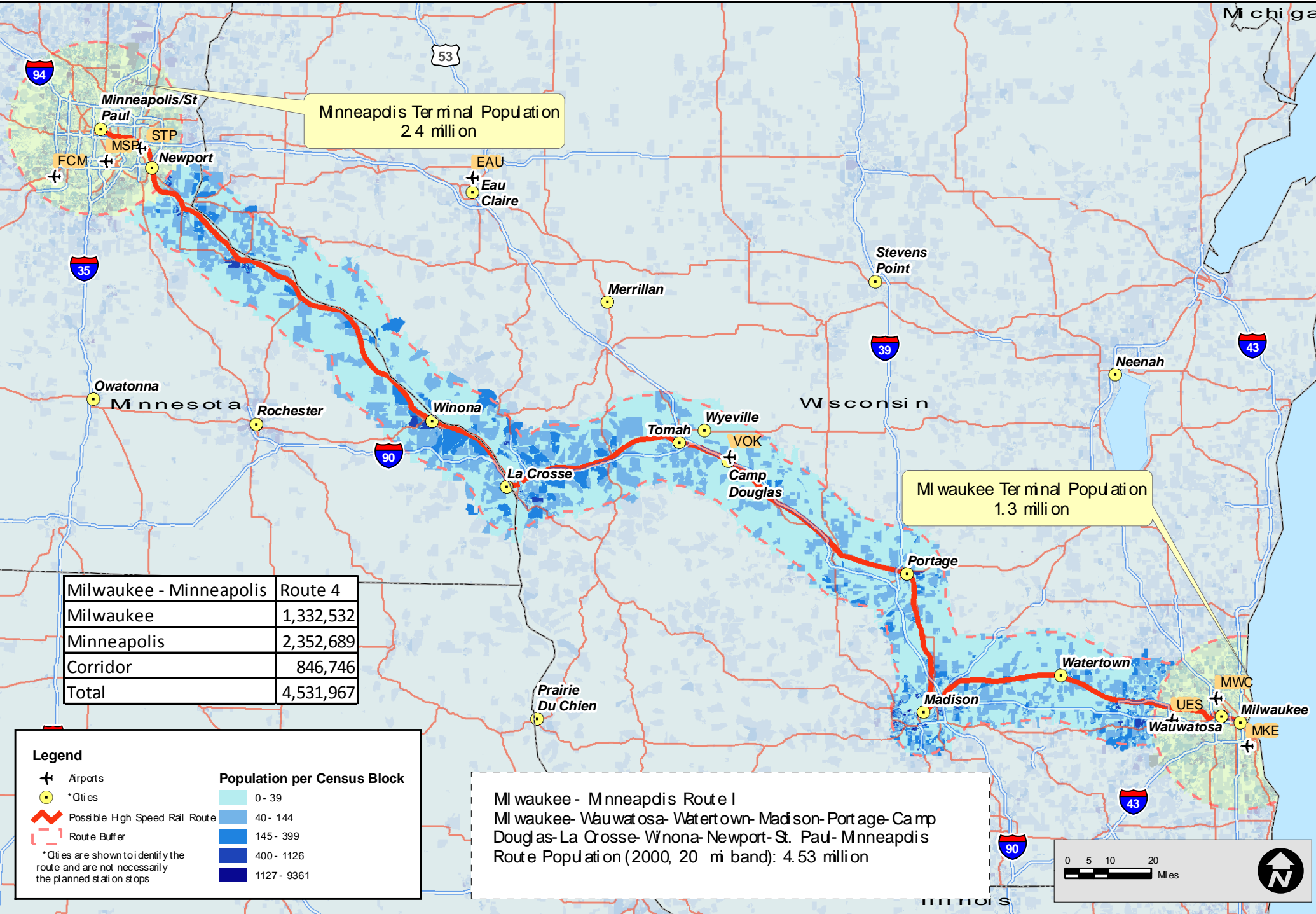
Milwaukee - Minneapolis Route 3
 Milwaukee - Wauwatosa - Watertown - Portage - Camp Douglas - La Crosse - Newport - St. Paul - Minneapolis
 Route Population (2000, 20 mi band): 4.19 million

0 5 10 20
 Miles



Midwest Regional Rail System Alternatives Analysis

Data Sources
 2000 US Census Data - census blocks
 2000 ESRI Census Data (SF1) - population
 2009 ESRI Data & Maps - base data



Minneapolis Terminal Population
2.4 million

Milwaukee Terminal Population
1.3 million

Milwaukee - Minneapolis	Route 4
Milwaukee	1,332,532
Minneapolis	2,352,689
Corridor	846,746
Total	4,531,967

Legend

- Airports
- *Cities
- Possible High Speed Rail Route
- Route Buffer

*Cities are shown to identify the route and are not necessarily the planned station stops

Population per Census Block

- 0 - 39
- 40 - 144
- 145 - 399
- 400 - 1126
- 1127 - 9361

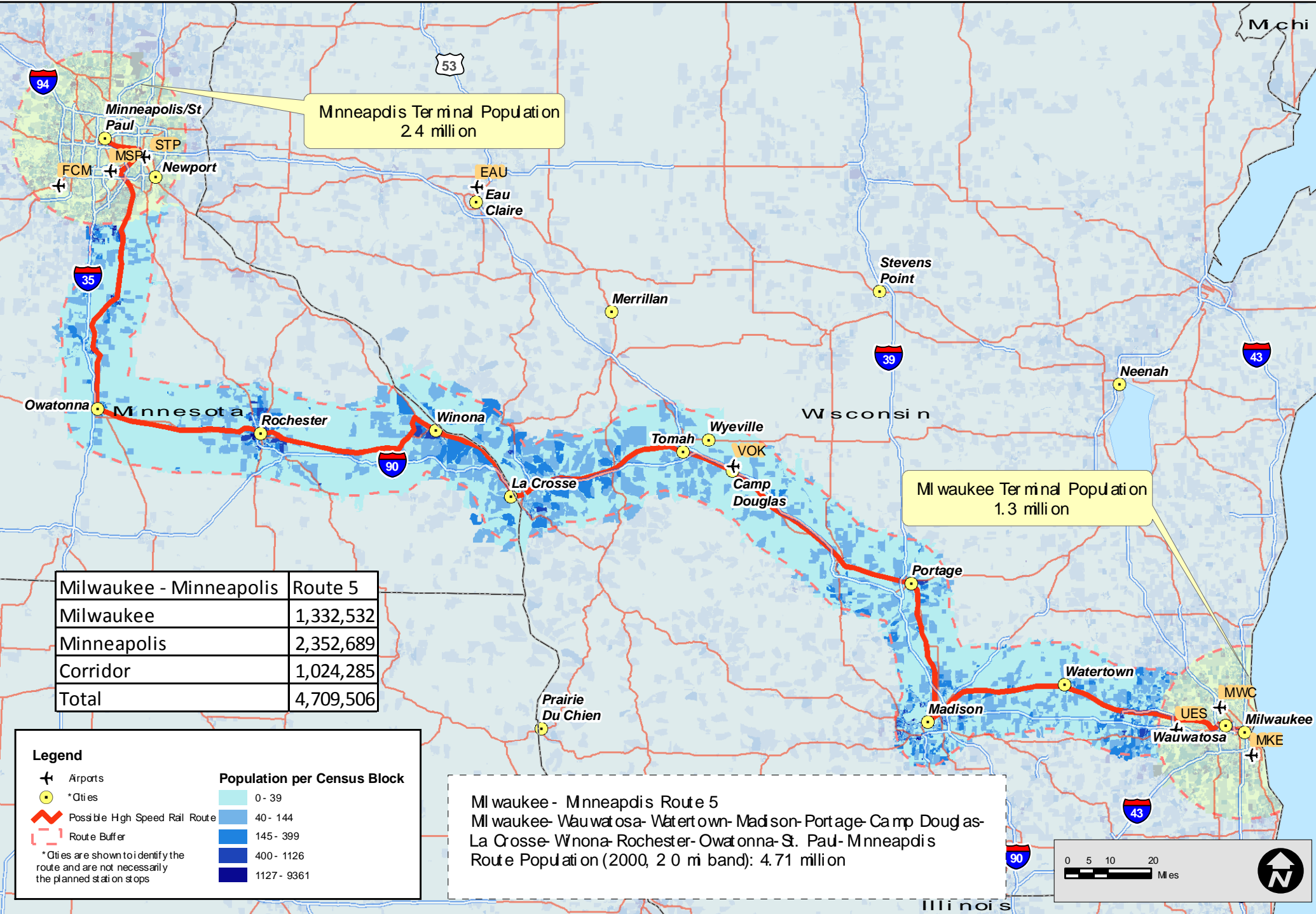
Milwaukee - Minneapolis Route I
 Milwaukee - Wauwatosa - Watertown - Madison - Portage - Camp Douglas - La Crosse - Winona - Newport - St. Paul - Minneapolis
 Route Population (2000, 20 mi band): 4.53 million

0 5 10 20
 Miles



Midwest Regional Rail System Alternatives Analysis

Data Sources
 2000 US Census Data - census blocks
 2000 ESRI Census Data (SF1) - population
 2009 ESRI Data & Maps - base data



Minneapolis Terminal Population
2.4 million

Milwaukee Terminal Population
1.3 million

Milwaukee - Minneapolis	Route 5
Milwaukee	1,332,532
Minneapolis	2,352,689
Corridor	1,024,285
Total	4,709,506

Legend

- Airports
- *Cities
- Possible High Speed Rail Route
- Route Buffer

*Cities are shown to identify the route and are not necessarily the planned station stops

Population per Census Block

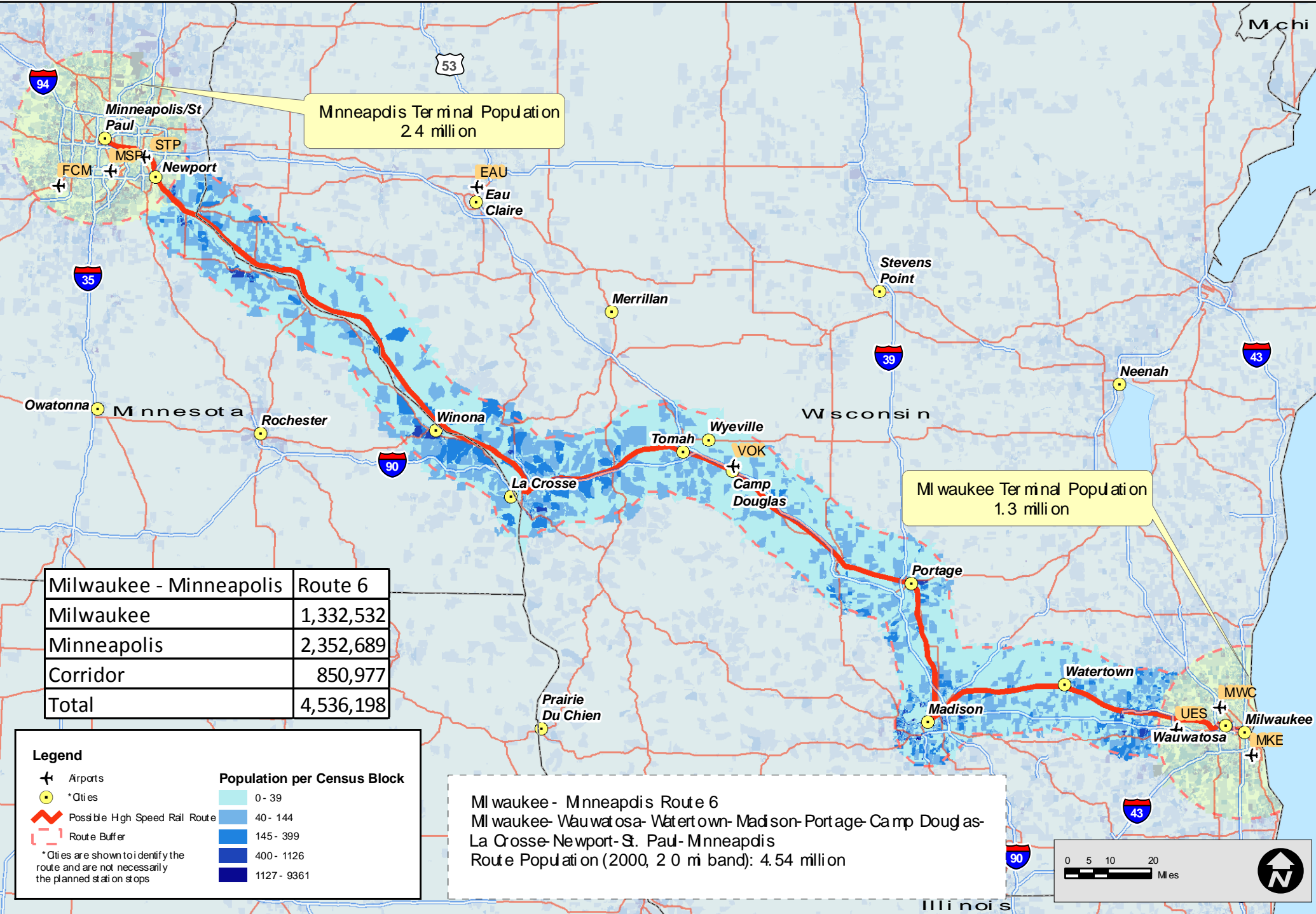
- 0 - 39
- 40 - 144
- 145 - 399
- 400 - 1126
- 1127 - 9361

Milwaukee - Minneapolis Route 5
 Milwaukee - Wauwatosa - Watertown - Madison - Portage - Camp Douglas -
 La Crosse - Winona - Rochester - Owatonna - St. Paul - Minneapolis
 Route Population (2000, 2.0 mi band): 4.71 million



Midwest Regional Rail System Alternatives Analysis

Data Sources
 2000 US Census Data - census blocks
 2000 ESRI Census Data (SF1) - population
 2009 ESRI Data & Maps - base data



Minneapolis Terminal Population
2.4 million

Milwaukee Terminal Population
1.3 million

Milwaukee - Minneapolis	Route 6
Milwaukee	1,332,532
Minneapolis	2,352,689
Corridor	850,977
Total	4,536,198

Legend

- ✈ Airports
- *Cities
- 🔴 Possible High Speed Rail Route
- ⬜ Route Buffer

*Cities are shown to identify the route and are not necessarily the planned station stops

Population per Census Block

- 0 - 39
- 40 - 144
- 145 - 399
- 400 - 1126
- 1127 - 9361

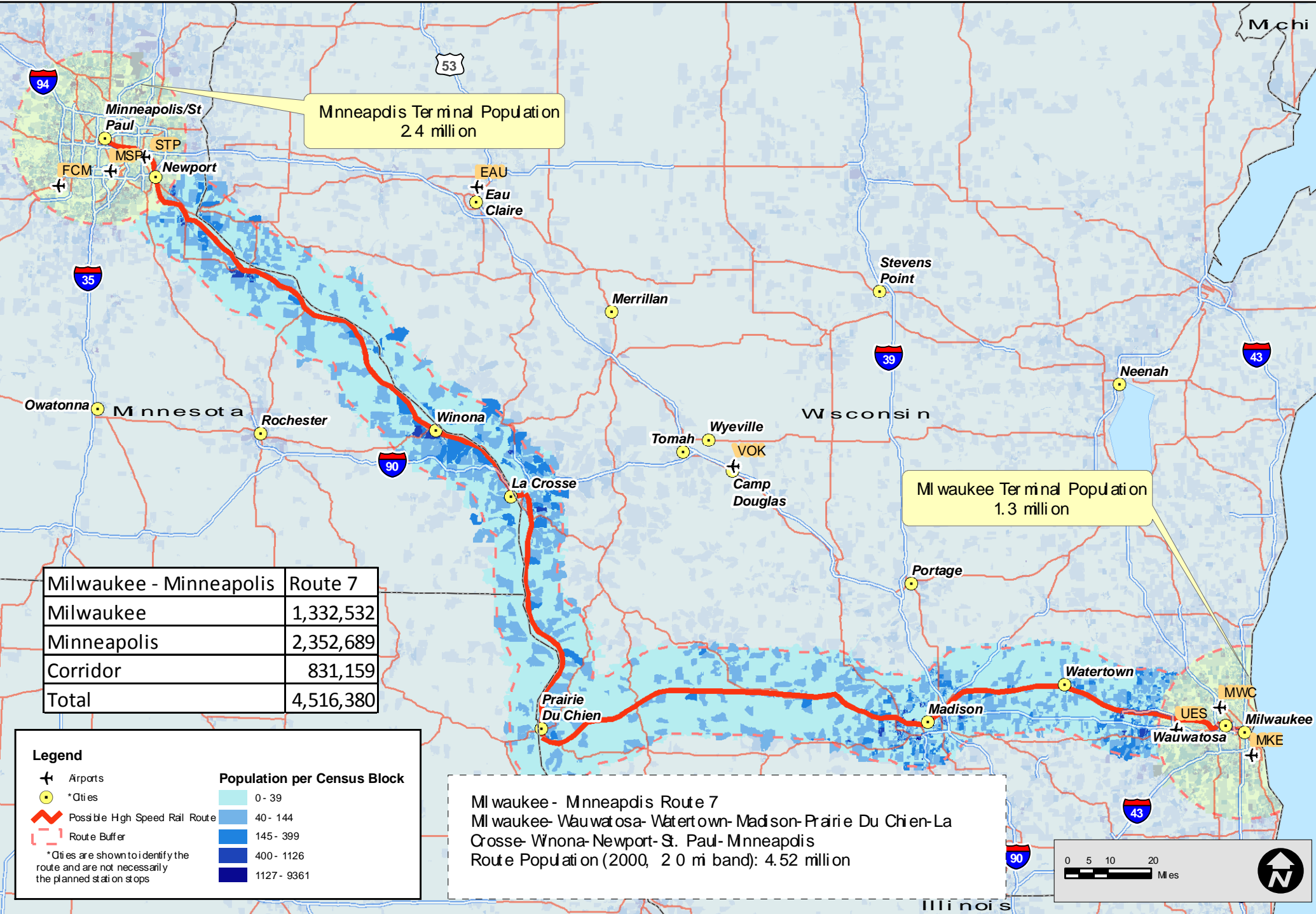
Milwaukee - Minneapolis Route 6
 Milwaukee - Wauwatosa - Watertown - Madison - Portage - Camp Douglas -
 La Crosse - Newport - St. Paul - Minneapolis
 Route Population (2000, 20 mi band): 4.54 million

0 5 10 20
 Miles



Midwest Regional Rail System Alternatives Analysis

Data Sources
 2000 US Census Data - census blocks
 2000 ESRI Census Data (SF1) - population
 2009 ESRI Data & Maps - base data



Milwaukee - Minneapolis	Route 7
Milwaukee	1,332,532
Minneapolis	2,352,689
Corridor	831,159
Total	4,516,380

Legend

- Airports (Cross symbol)
- *Cities (Yellow dot symbol)
- Possible High Speed Rail Route (Red line symbol)
- Route Buffer (Dashed red line symbol)

*Cities are shown to identify the route and are not necessarily the planned station stops

Population per Census Block

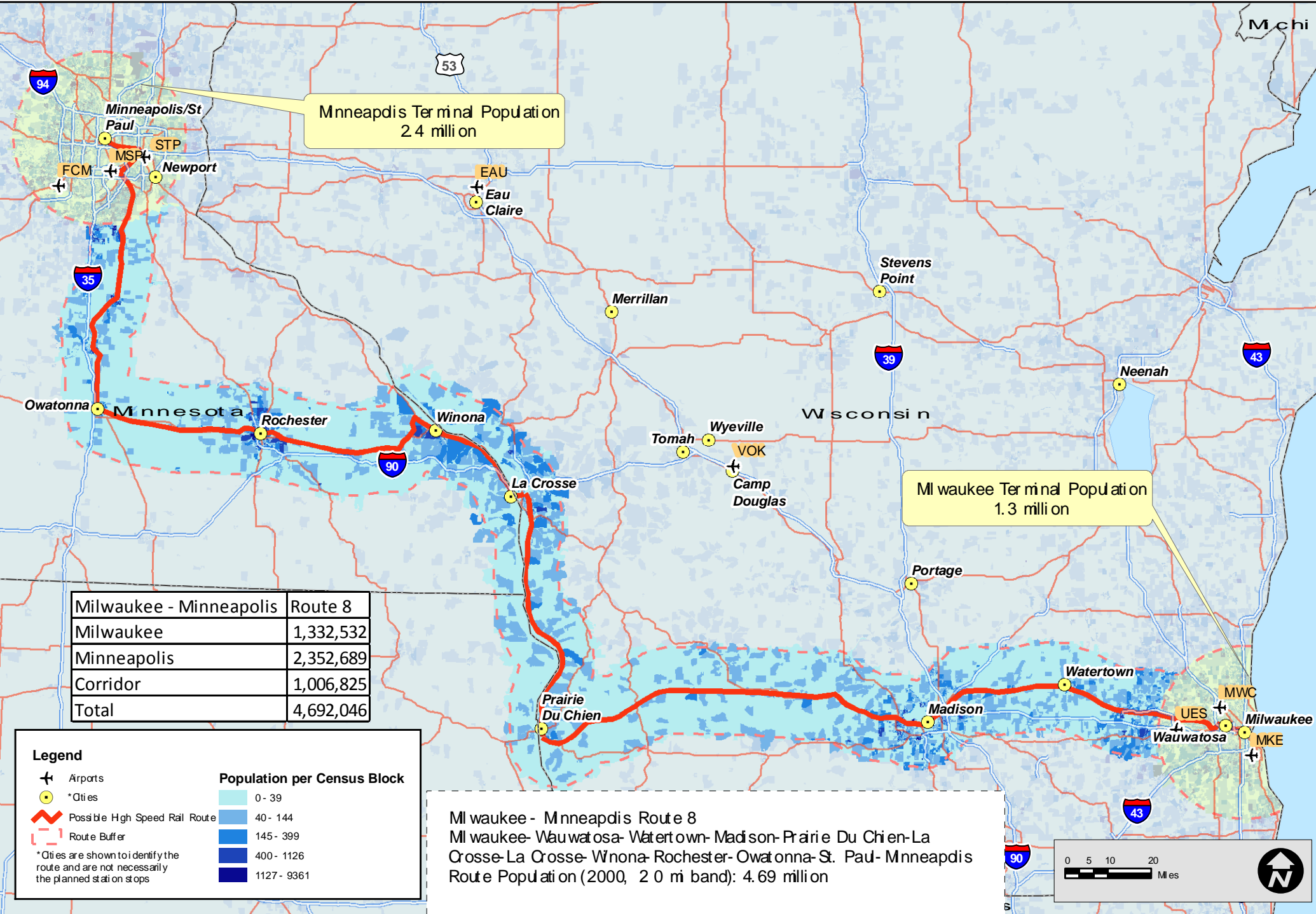
- 0 - 39
- 40 - 144
- 145 - 399
- 400 - 1126
- 1127 - 9361

Milwaukee - Minneapolis Route 7
 Milwaukee - Wauwatosa - Watertown - Madison - Prairie Du Chien - La Crosse - Winona - Newport - St. Paul - Minneapolis
 Route Population (2000, 20 mi band): 4.52 million



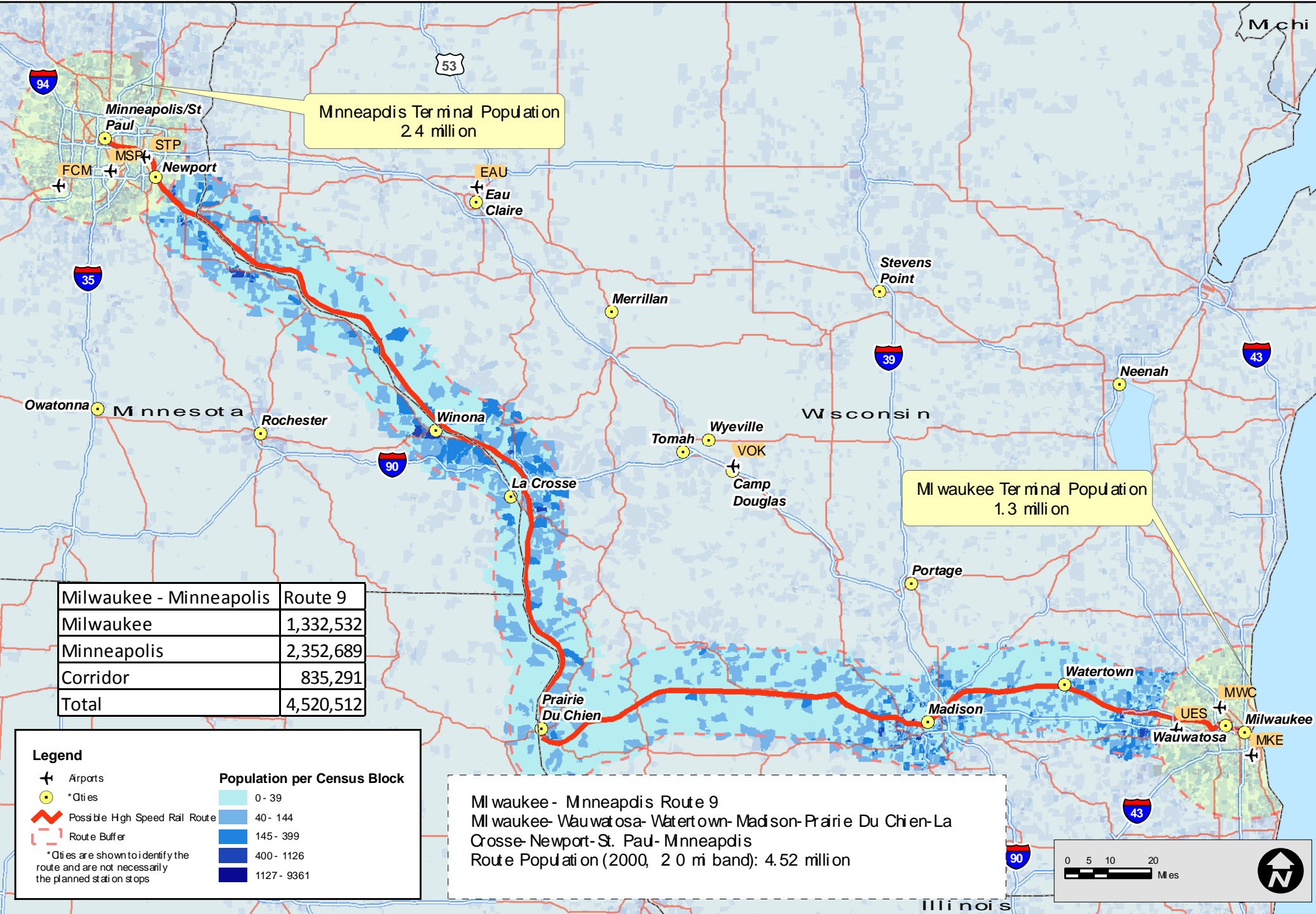
Midwest Regional Rail System Alternatives Analysis

Data Sources
 2000 US Census Data - census blocks
 2000 ESRI Census Data (SF1) - population
 2009 ESRI Data & Maps - base data



Midwest Regional Rail System Alternatives Analysis

Data Sources
 2000 US Census Data - census blocks
 2000 ESRI Census Data (SF1) - population
 2009 ESRI Data & Maps - base data



Minneapolis Terminal Population
2.4 million

Milwaukee Terminal Population
1.3 million

Milwaukee - Minneapolis	Route 9
Milwaukee	1,332,532
Minneapolis	2,352,689
Corridor	835,291
Total	4,520,512

Legend

- Airports
- *Cities
- Possible High Speed Rail Route
- Route Buffer

*Cities are shown to identify the route and are not necessarily the planned station stops

Population per Census Block

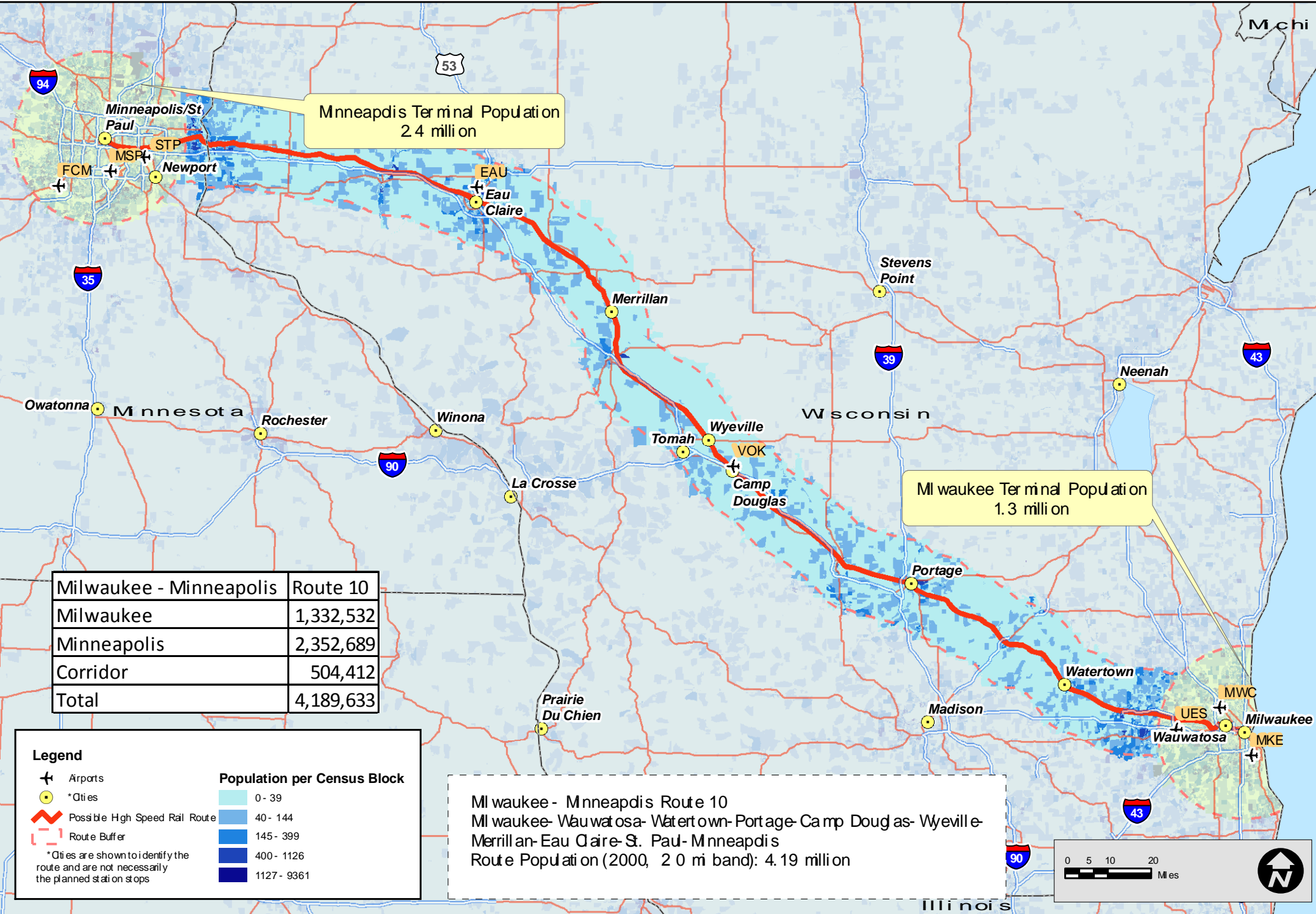
- 0 - 39
- 40 - 144
- 145 - 399
- 400 - 1126
- 1127 - 9361

Milwaukee - Minneapolis Route 9
 Milwaukee - Wauwatosa - Watertown - Madison - Prairie Du Chien - La Crosse - Newport - St. Paul - Minneapolis
 Route Population (2000, 20 mi band): 4.52 million



Midwest Regional Rail System Alternatives Analysis

Data Sources
 2000 US Census Data - census blocks
 2000 ESRI Census Data (SF1) - population
 2009 ESRI Data & Maps - base data



Minneapolis Terminal Population
2.4 million

Milwaukee Terminal Population
1.3 million

Milwaukee - Minneapolis	Route 10
Milwaukee	1,332,532
Minneapolis	2,352,689
Corridor	504,412
Total	4,189,633

Legend

- Airports
- *Cities
- Possible High Speed Rail Route
- Route Buffer

*Cities are shown to identify the route and are not necessarily the planned station stops

Population per Census Block

- 0 - 39
- 40 - 144
- 145 - 399
- 400 - 1126
- 1127 - 9361

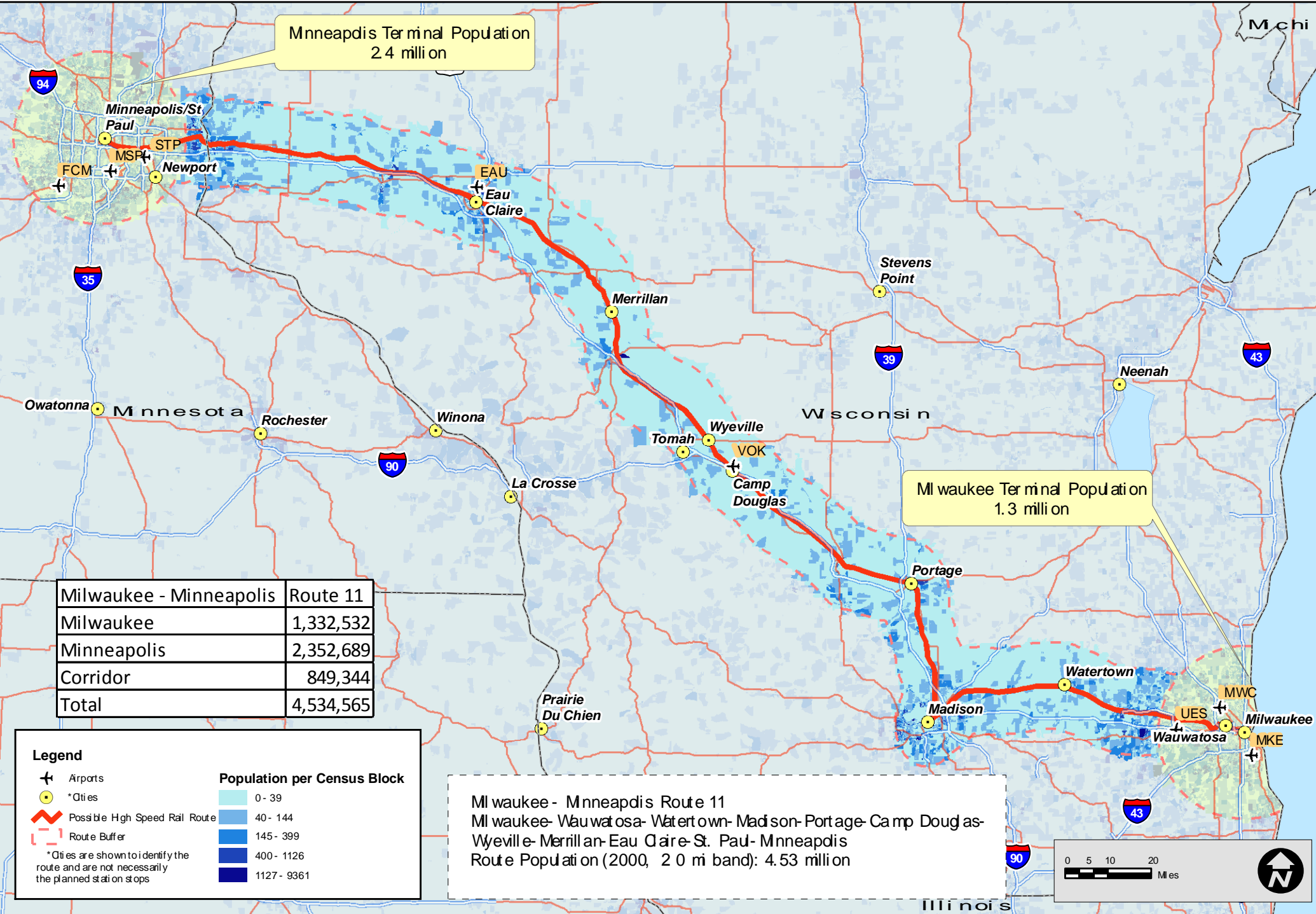
Milwaukee - Minneapolis Route 10
 Milwaukee - Wauwatosa - Watertown - Portage - Camp Douglas - Wyeville -
 Merrillan - Eau Claire - St. Paul - Minneapolis
 Route Population (2000, 20 mi band): 4.19 million

0 5 10 20
 Miles



Midwest Regional Rail System Alternatives Analysis

Data Sources
 2000 US Census Data - census blocks
 2000 ESRI Census Data (SF1) - population
 2009 ESRI Data & Maps - base data



Minneapolis Terminal Population
2.4 million

Milwaukee Terminal Population
1.3 million

Milwaukee - Minneapolis	Route 11
Milwaukee	1,332,532
Minneapolis	2,352,689
Corridor	849,344
Total	4,534,565

Legend

- Airports
- *Cities
- Possible High Speed Rail Route
- Route Buffer

*Cities are shown to identify the route and are not necessarily the planned station stops

Population per Census Block

- 0 - 39
- 40 - 144
- 145 - 399
- 400 - 1126
- 1127 - 9361

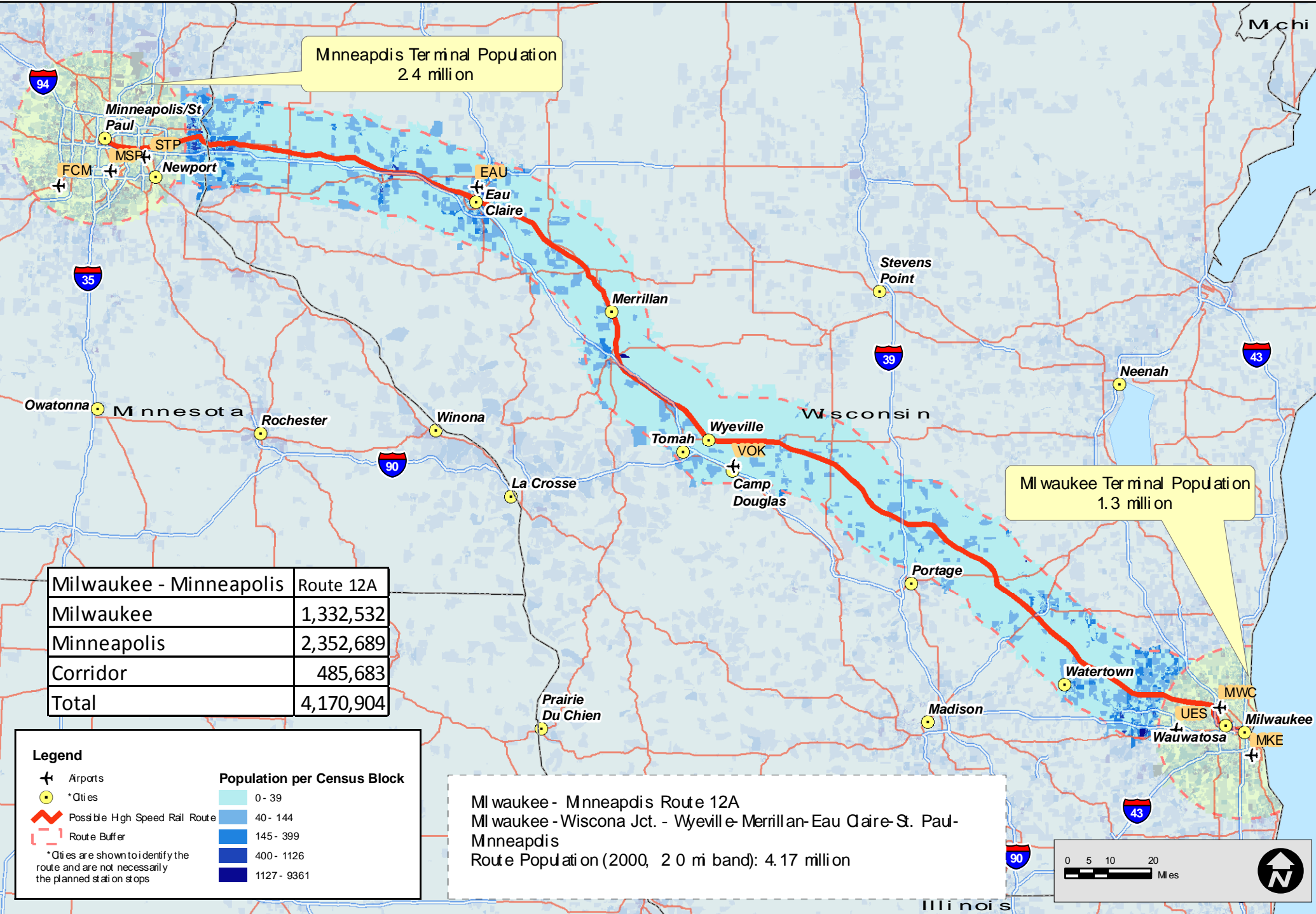
Milwaukee - Minneapolis Route 11
 Milwaukee - Wauwatosa - Watertown - Madison - Portage - Camp Douglas -
 Weyville - Merrilan - Eau Claire - St. Paul - Minneapolis
 Route Population (2000, 20 mi band): 4.53 million

0 5 10 20
 Miles



Midwest Regional Rail System Alternatives Analysis

Data Sources
 2000 US Census Data - census blocks
 2000 ESRI Census Data (SF1) - population
 2009 ESRI Data & Maps - base data



Mnneapolis Terminal Population
2.4 million

Milwaukee Terminal Population
1.3 million

Milwaukee - Minneapolis	Route 12A
Milwaukee	1,332,532
Minneapolis	2,352,689
Corridor	485,683
Total	4,170,904

Legend

- ✈ Airports
- *Cities
- 🔴 Possible High Speed Rail Route
- - - Route Buffer

*Cities are shown to identify the route and are not necessarily the planned station stops

Population per Census Block

- 0 - 39
- 40 - 144
- 145 - 399
- 400 - 1126
- 1127 - 9361

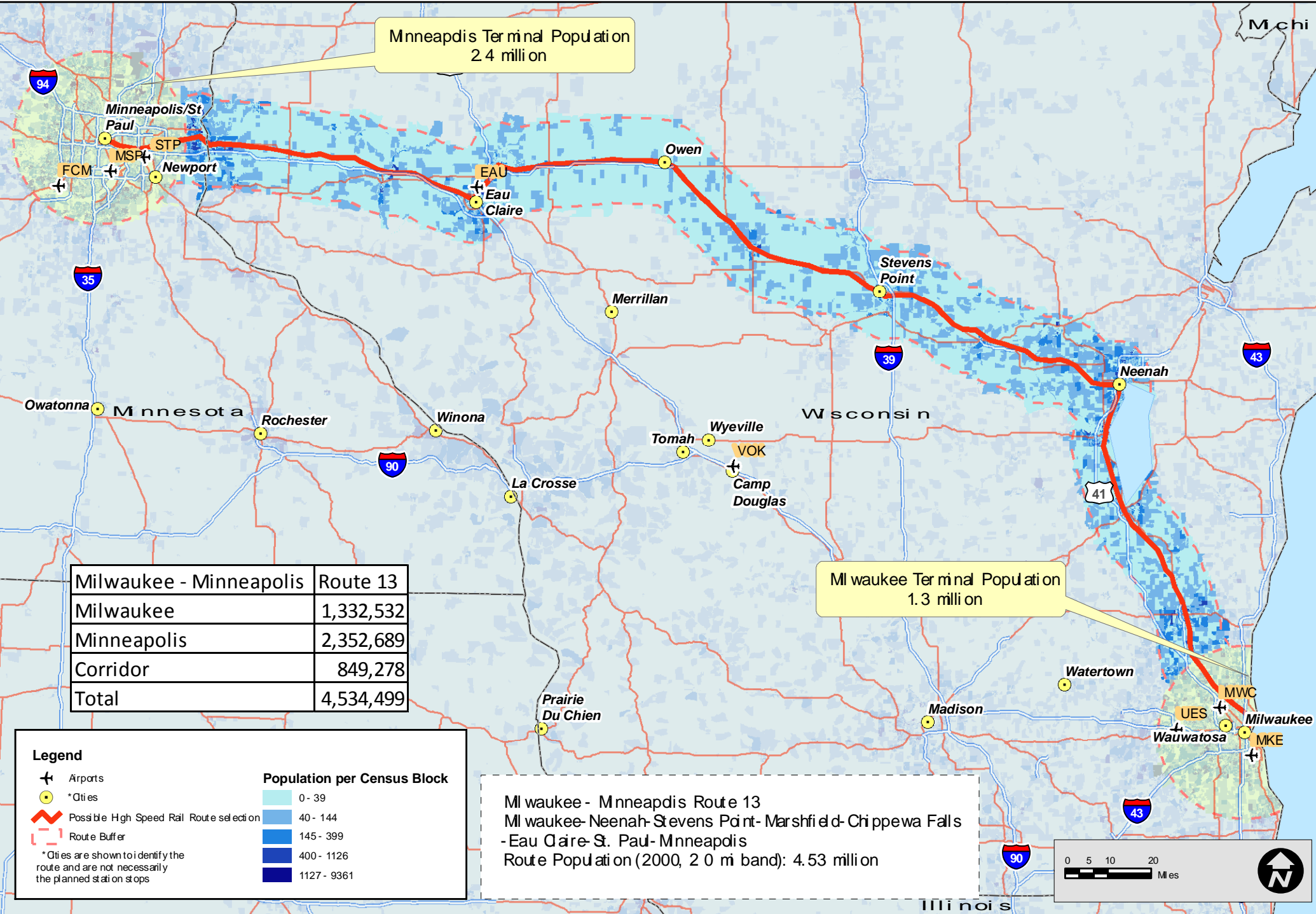
Milwaukee - Minneapolis Route 12A
 Milwaukee - Wisconsin Jct. - Weyville - Merrillan - Eau Claire - St. Paul -
 Minneapolis
 Route Population (2000, 20 mi band): 4.17 million

0 5 10 20
 Miles



Midwest Regional Rail System Alternatives Analysis

Data Sources
 2000 US Census Data - census blocks
 2000 ESRI Census Data (SF1) - population
 2009 ESRI Data & Maps - base data



Minneapolis Terminal Population
2.4 million

Milwaukee Terminal Population
1.3 million

Milwaukee - Minneapolis	Route 13
Milwaukee	1,332,532
Minneapolis	2,352,689
Corridor	849,278
Total	4,534,499

Legend

- Airports
- * Cities
- Possible High Speed Rail Route selection
- Route Buffer

* Cities are shown to identify the route and are not necessarily the planned station stops

Population per Census Block

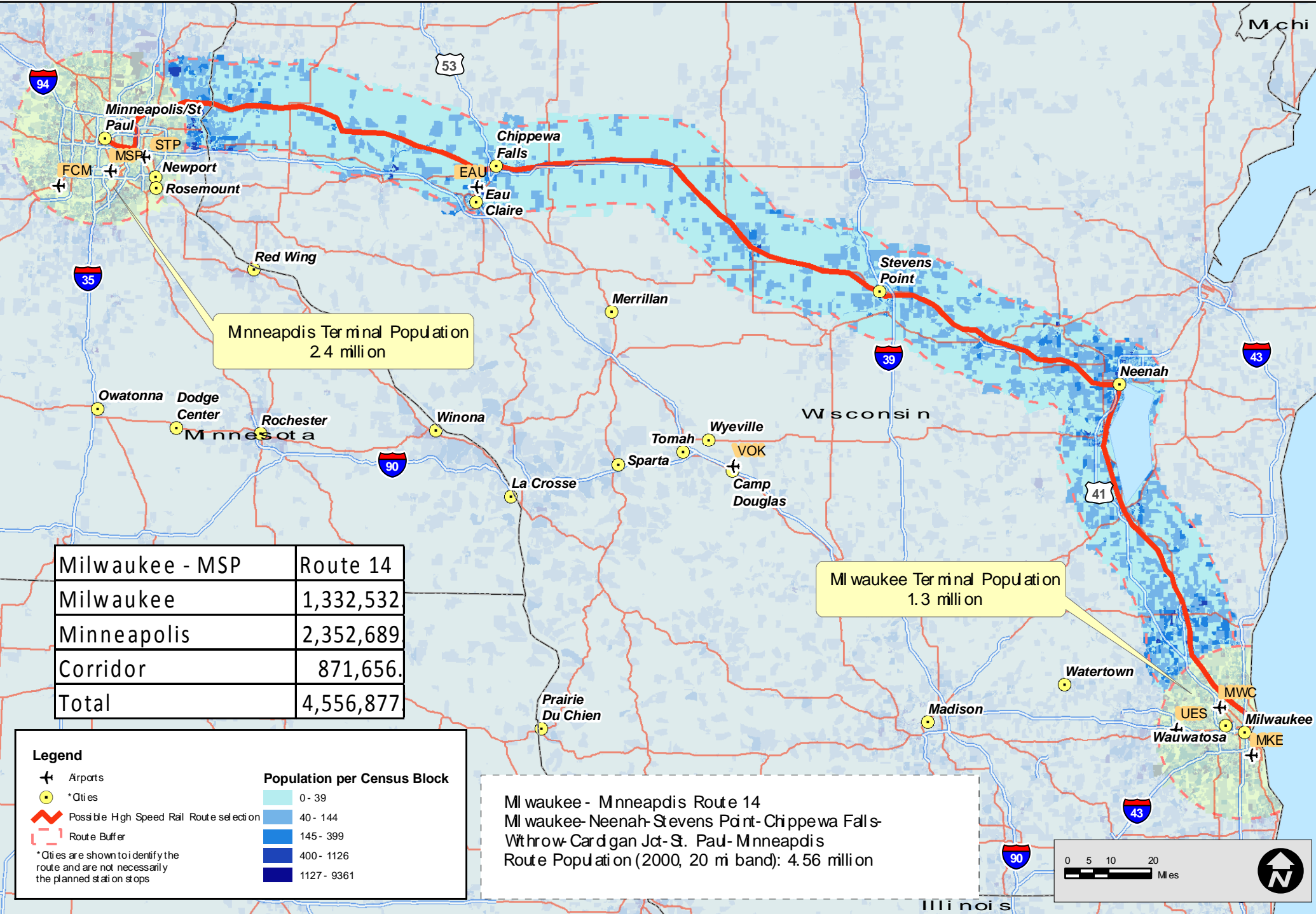
- 0 - 39
- 40 - 144
- 145 - 399
- 400 - 1126
- 1127 - 9361

Milwaukee - Minneapolis Route 13
 Milwaukee-Neenah-Stevens Point-Marshfield-Chippewa Falls
 -Eau Claire-St. Paul-Minneapolis
 Route Population (2000, 2.0 mi band): 4.53 million



Midwest Regional Rail System Alternatives Analysis

Data Sources
 2000 US Census Data - census blocks
 2000 ESRI Census Data (SF1) - population
 2009 ESRI Data & Maps - base data



Mnneapolis Terminal Population
2.4 million

Milwaukee Terminal Population
1.3 million

Milwaukee - MSP	Route 14
Milwaukee	1,332,532
Minneapolis	2,352,689
Corridor	871,656
Total	4,556,877

Legend

- Airports
- Cities
- Possible High Speed Rail Route selection
- Route Buffer

* Cities are shown to identify the route and are not necessarily the planned station stops

Population per Census Block

- 0 - 39
- 40 - 144
- 145 - 399
- 400 - 1126
- 1127 - 9361

Milwaukee - Minneapolis Route 14
 Milwaukee - Neenah - Stevens Point - Chippewa Falls -
 Watertown - Cardigan Jct - St. Paul - Minneapolis
 Route Population (2000, 20 mi band): 4.56 million

0 5 10 20
 Miles



Midwest Regional Rail System Alternatives Analysis

Data Sources
 2000 US Census Data - census blocks
 2000 ESRI Census Data (SF1) - population
 2009 ESRI Data & Maps - base data